



Please note the gallery is open when new shows are being hung.

Four unique spaces
and sculpture garden with over 300 artists' work on display.

178a Middlewood Road
Hillsborough
Sheffield S6 1TD
Tel/Fax 0114 285 2665
email info@cupolagallery.com

Now open on Sundays
Tuesday - Saturday 10am - 6.30pm
Sunday 11am - 4pm

Free chocolate cake every Saturday
www.cupolagallery.com



'Like A Fool' John Brokenshire

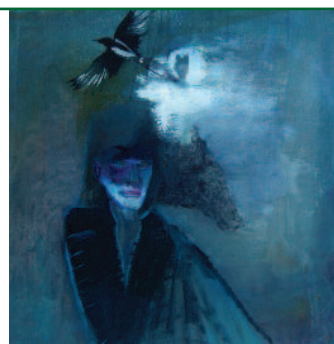
"Mayfield Valley, like a fool I go and it's cold, gray and misty. Finding a new culvert with bright spring water where the earth is sweet and lightly grabbed in a palm. Higher into the chill a winter tree is bare with black crows clustering: peace, crows; I think as loudly as I can. Heart bumping now I'm thinking of my paintings when, by a rusty gate on a wire, is a spool - a skein of lambs' wool. Each soft grey wispy hair is spaced with shining dew, each drop so ridiculously tiny. Now I remember how my smallest gaze tiptoed that xylophone"

John Brokenshire.

A solo painting exhibition of two bodies of work, one abstract and one with narrative figurative elements utilizing two distinct gallery spaces at Cupola.

Friday 5 Feb - Sunday 21 March

'Magpie' by John Brokenshire



'Anthropocene'* Featuring The Seven Wonders Paul Evans

A number of the paintings created for Anthropocene are based around the concept of The Seven Wonders; seven spectacular landmarks from the Derbyshire Peak District. This resurrects a poetic theme revisited several times throughout the 16th and 17th centuries and these works have been created in collaboration with a number of award winning poets. The poets involved are Chris Jones, Matthew Clegg and Mark Goodwin (all winners of the Gregory Award), Rob Hindle (winner of the Templar Poetry Pamphlet Competition) and James Caruth.

*The term Anthropocene is used by some scientists to describe the most recent period in the Earth's history. It has no precise start date, but may be considered to start in the late 18th century when the activities of humans first began to have a significant global impact on the Earth's climate and ecosystems.

Friday 26 March - Sunday 9 May
Opening Evening: Friday 26 March, 7.30pm onwards
Poetry reading and in conversation event on 23rd April



'Fish & Fowl' Lyn Hodnett

Cupola is delighted to welcome back award winning, locally based, Lyn for her fifth solo show. This new body of work sees a single, powerful and often very beautiful woman at the centre of nearly every image. Women have always played a central role in Lyn's work but these women seem more serious, more assured, more powerful and more commanding than ever. These simple compositions featuring single (isolated) women with (often) either fish or birds painted using a fairly dark colour palette give extra symbolic weight to both the figure and the fish or birds sharing the 'stage'.

Friday 14 May - Sunday 27 June
Opening Evening Friday 14 May, 7.30pm onwards

'The Catch' (detail) by Lyn Hodnett



Hanne Westergaard Ceramic Showcase - especially for the garden.

To coincide with the opening of Lyn Hodnett's exhibition, Hanne will be showcasing a collection of her distinctive ceramic work. Stoneware, sawdust and wood-fired pieces often featuring bold geometric design will be on display in Cupola's blossoming sculpture garden. Work will include garden pots, planters and bird-baths. The centre-piece of the display is a specially commissioned water feature. Work for sale.

Friday 14th May - Sunday 29 August

Photos by Ian Gracey



Mid Summer Madness! 'Sale' plus workshops, activities, talks and events

Mid Summer Madness is our version of the much-requested 'Under The Bed Sale' for the summer months. We hope that our summer sale linked to a new collection of work plus workshops, talks and events will add some excitement and fun to the infamous 'British Summer'! The full programme of activity will be available on our website from June.

Friday 2 July - Sunday 29 August
Opening Evening: Friday 2 July, 7.30pm onwards



'Trace' Danielle Creenaune

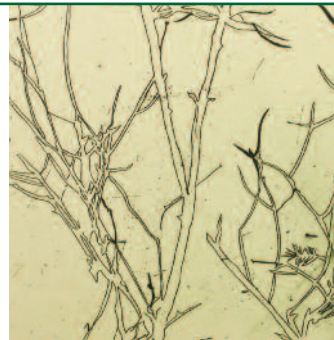
This exhibition traverses the meaning of "trace" in relation to our experience of place and landscape. "My work reflects hybrid landscapes which are both inherited and imagined. While the landscapes are real, there is a merging of present adopted European landscapes and those which long for the Australian landscape of my past. I am interested in what landscape holds for the individual in terms of memory, private connection and a sense of belonging."

Danielle Creenaune 2010

Her work can be found in international collections including The National Gallery of Australia and she has won awards including the Julian Trevelyan Award UK, the Miniprint International of Cadaques, Spain.

Friday 3 September - Sunday 10 Oct
Opening Evening: Friday 3 September, 7.30pm onwards
Proposed In conversation and printmaking Master class - date to be announced.

'Hafod' (detail) by Danielle Creenaune



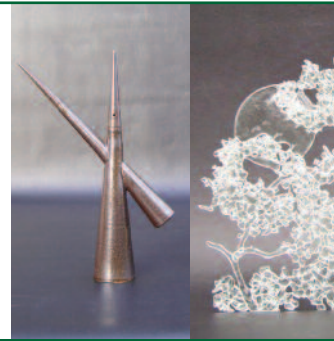
R&R - 'Not designed for industry' Paula & Ian Rylatt Joint glass & ceramics exhibition

"An exhibition of work that is 'Craft'. It is art. It is design. It is skill. But it is definitely not designed for industry. We are for the total human involvement in the making of something, and for the human quality in the finished article.

From our hands to your hands, we offer that touch: the beauty of the hand-crafted item; an oasis in our industrial designed world. 'Take a break. Rest and Relax.' Rylatt & Rylatt

Friday 15 October - Sunday 28 Nov
Opening Evening: Friday 15 October, 7.30pm onwards

'Moon Tree' (left) & 'Intersection' (right)



Inspired by William Blake selected mixed group exhibition

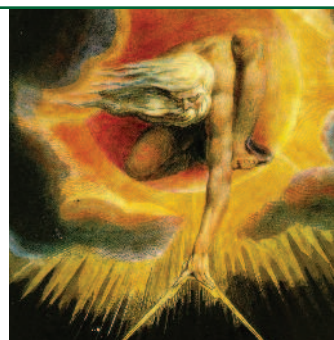
This is a selected mixed group exhibition of work that is inspired by, or takes inspiration from, the radical visionary artist & poet William Blake.

"William Blake is an artist that has inspired, moved and touched generations of creative artists. This exhibition is another opportunity to see how the current generation of artists respond to his ideas and works."

This exhibition will feature the best fine art and fine craft sourced from around the country. For inspirational as well as unique seasonal gifts look no further than Cupola Gallery. Prices from under £10 - £5000. Painting, printmaking, glass, textiles, jewellery, ceramics and sculpture will be on display.

Friday 3 December - Sunday 9 Jan 2011
Opening Evening Friday 3 December, 7.30pm onwards

'Ancient of Days' by William Blake



Under The Bed Sale 2011

"What can I say? The biggest, best, most eagerly awaited event of the Cupola calendar. Simply a massive sale with prices from £1- £300. Older and early works from artists across all media sold off at bargain prices. One not to be missed!" *Karen Sherwood, Director.*

Wednesday 12 January - Sunday 30 Jan
Opening Evening: Wed 12 January, 7.30pm onwards

Illustration by Lyn Hodnett

